

# AI Governance: The New Frontier of Algorithmic Risk

## **SPEAKERS**

**Dr. Phil Moulton**

Director – Enterprise Risk Management | Premiera Blue Cross

**Quin Rodriguez**

VP, Strategy & Innovation | Riskonnect, Inc.

CONNECTING RISKS THAT MATTER

2025 **KOnnect**

# **Future-Forward Provocations**



Do you believe AI will replace more than 50% of risk management tasks in the next 24 months?

TEST MOD

Ends in:

12<sup>d</sup> 23<sup>h</sup> 59<sup>m</sup> 48<sup>s</sup>

0% 25% 50% 75%

0 total participants | 0 votes

1 / 1

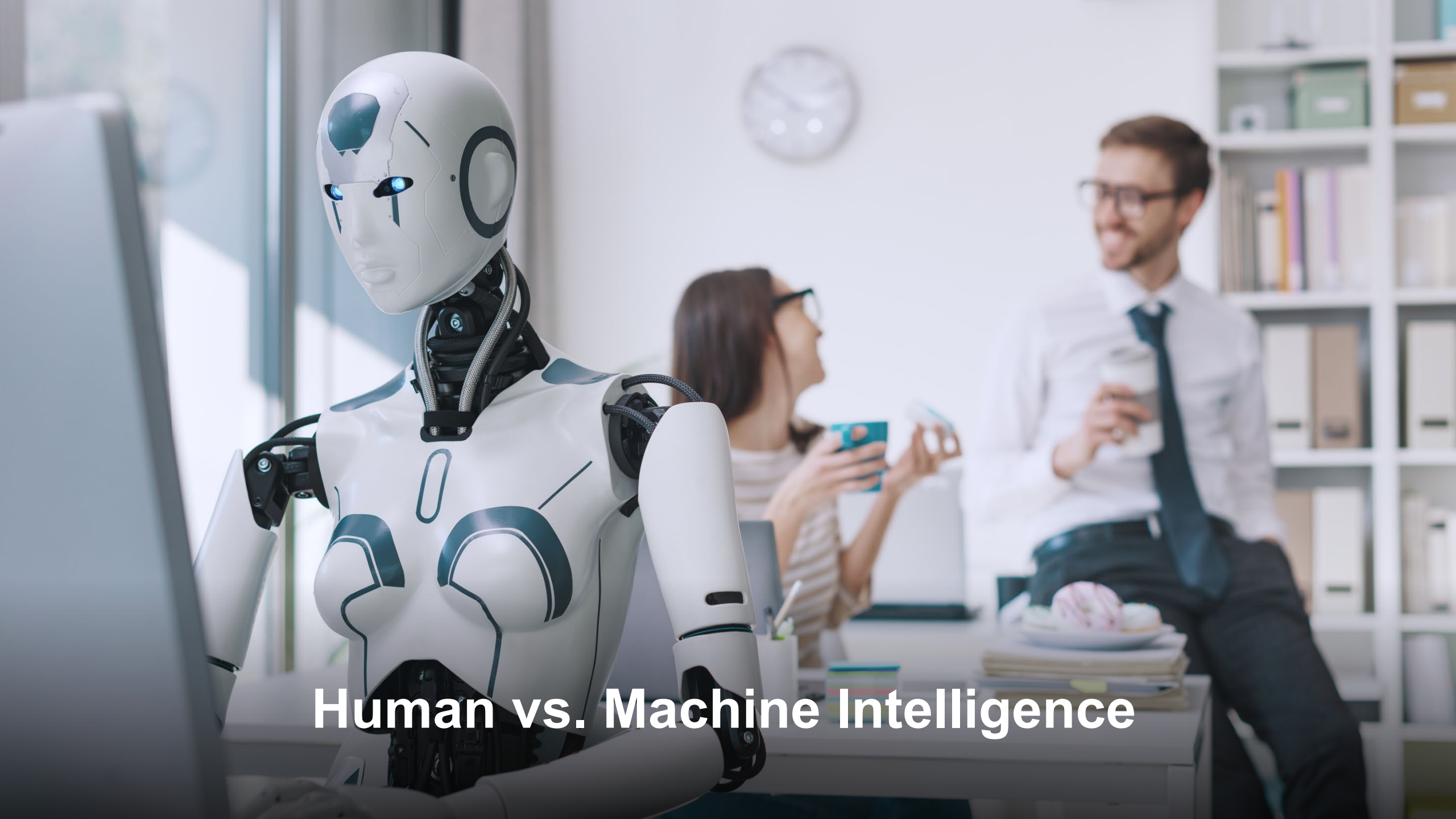


Go to [pigeonhole.at](https://pigeonhole.at)

**2025KONNECT**

2025 **Kōnnect**





# Human vs. Machine Intelligence

Which skill will be most valuable in the AI-augmented future?



0 total participants | 0 votes

1 / 1



Go to [pigeonhole.at](https://pigeonhole.at)

**2025KONNECT**

2025 **Kōnnect**





# Practical Use & Adoption

How mature is your organization's AI governance framework?



0 total participants | 0 votes

1 / 1



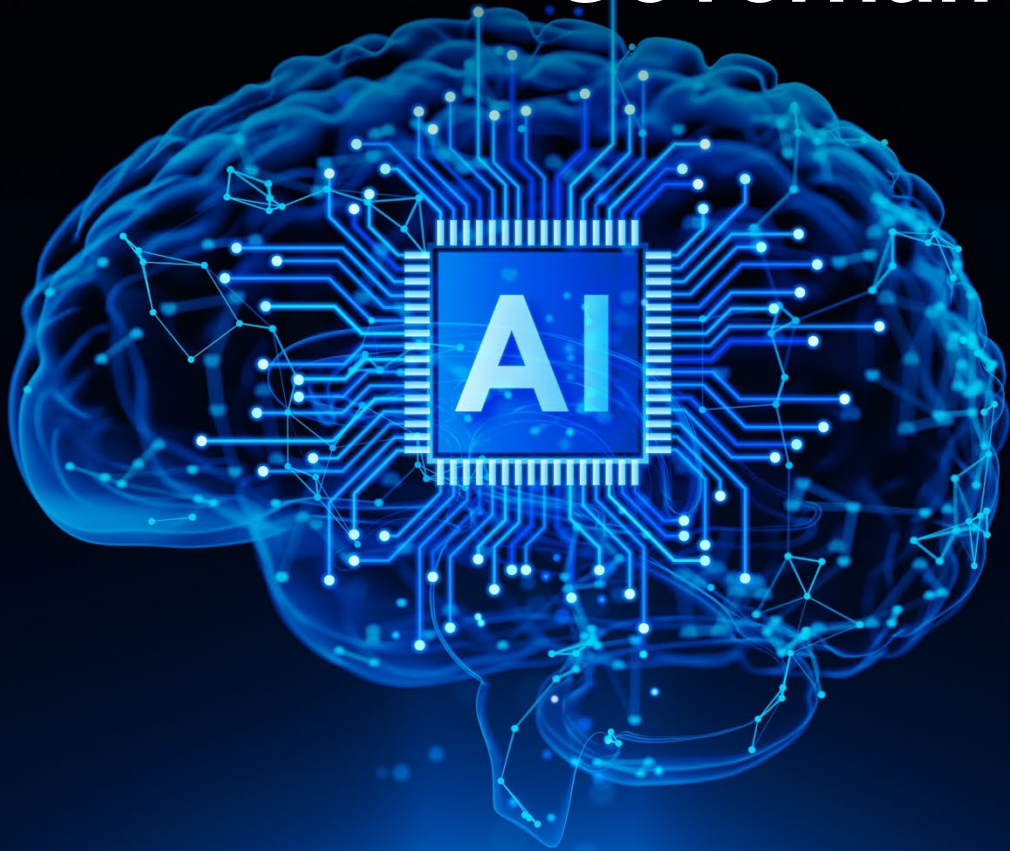
Go to [pigeonhole.at](https://pigeonhole.at)

2025KONNECT

2025Kōnnect



# Governance & Regulation





Is your organization

TEST MOD

We are risk averse 0%

We have a healthy AI risk appetite 0%

Ends in:

12<sub>d</sub> 23<sub>h</sub> 56<sub>m</sub> 26<sub>s</sub>

0 total participants | 0 votes

1 / 1



Go to [pigeonhole.at](https://pigeonhole.at)

**2025KONNECT**

2025 **KONnect**



**Cultural & Organizational Readiness**



2025 **Kōnnect**

# Questions?

CONNECTING RISKS THAT MATTER



# THE MATRIX

---

# Thank You!

CONNECTING RISKS THAT MATTER

2025  KOnnect

# Connect with me.

## Dr. Phil Moulton

e: [phil.moulton@premera.com](mailto:phil.moulton@premera.com)

[premera.com/](https://premera.com/)

 [philipmoulton/](https://www.linkedin.com/in/philipmoulton/)

## Quin Rodriguez

e: [quin.rodriguez@riskconnect.com](mailto:quin.rodriguez@riskconnect.com)

[riskconnect.com](https://riskconnect.com)

 [quin-j-rodriguez-4114821](https://www.linkedin.com/in/quin-j-rodriguez-4114821)

2025  **KONnect**