

The Risk Intelligence Awakening: Moving from Concept to Reality

SPEAKERS

Steve Hemingway

EHS Director | QXO

Kim Alderman

Director, AI Innovation Lab | Riskonnect, Inc.

Stuart Rose

Product Marketing | Riskonnect, Inc.

CONNECTING RISKS THAT MATTER

2025 **KOnnect**

Our vision . . .

Initial use of Riskonnect Audit App
Concept to production in 3 months

CONNECTING RISKS THAT MATTER

Vision, Design, Development, Testing



Questionnaire Template

Branch (SER) Assessment TEMPLATE

Category

VAULT, do not publish

Access Type

All

General Info

Description

This assessment is to help ensure good branch communication, safety in the yard and warehouse, and environmental responsibility.

Add Section

Reorder Sections

Edit

Question Types

Text (Plain)

Text (Rich)

Text Area

Email

Information/Instruction

Date

URL

Checkbox

Picklist

Number/Currency

Lookup

Toggle

Signature

Slider

Media File

Warehouse

Edit

Delete

Move to New Section

* WALKING, WORKING, SURFACES: Free from tripping hazards (cords, banding, wrap, wood, elevation change, etc.)?

Select an Option

SUPPORTING QUESTIONS

Comment

* ELEVATED SURFACES: Are stairway and mezzanine railings free from damage and being used properly?

Select an Option

SUPPORTING QUESTIONS

Comment

Previous

Next

Optimizing Safety Audits (Oct. 29th, 2024)



| TEMPLATE NAME | DESCRIPTION |
|--|---|
| Monthly Crane & Boom Inspection TEMPLATE | This has been developed to help you conduct an observation of a boom or crane operation. |
| Weekly Facilities Assessment TEMPLATE | This has been prepared to help assess maintenance of the Branch on a weekly basis. |
| Annual Facilities Assessment TEMPLATE | This has been prepared to help assess the quality and safety of the building. |
| Action Item on the Fly TEMPLATE | When the need presents itself to create an action item on the fly! |
| Ergonomic Assessment TEMPLATE | This is to evaluate how the branch addresses ergonomics and body mechanics to prevent strains and sprains as well as other injuries/illnesses. |
| Truck & Binder Assessment TEMPLATE | This assessment is designed to inspect the truck binder for required documentation. |
| Wire Rope Crane Observation TEMPLATE | This has been developed to help you conduct an observation of a wire rope crane. |
| Truck Mounted Forklift Assessment TEMPLATE | This has been prepared to help you conduct an assessment of a Powered Industrial Truck (PIT), specifically a truck-mounted forklift. |
| Fall Protection PPE Observation TEMPLATE | This PPE Observation has been created for job sites where there IS working at height! |
| Roof Loading Job Site Assessment TEMPLATE | This assessment is designed to identify and address safety concerns at a Job Site in which there is work at height being performed. |
| Job Site Assessment TEMPLATE | This assessment is designed to identify and address safety concerns at a Job Site in which there is NO work at height being performed. |
| Boom or Crane Observation TEMPLATE | This has been developed to help you conduct an observation of a boom or crane operation. |
| Off-Spec Haz Mat Assessment TEMPLATE | This assessment is used if there is any off-spec hazardous material identified that needs to be, or has been, properly disposed of. |
| Branch Forklift Assessment TEMPLATE | This has been prepared to help you conduct an assessment of a Powered Industrial Truck (PIT), specifically a branch warehouse or yard forklift. |
| Job Site PPE Observation TEMPLATE | This PPE observation has been created for job sites with NO working at height. |
| Branch PPE Observation TEMPLATE | This has been created to help you conduct a personal protection observation at a Beacon Branch (yard and/or warehouse). |
| Branch Employee Observation TEMPLATE | This is to help conduct an employee safety observation in the warehouse or in our yard. |
| Driver Ride Along TEMPLATE | This observation is for a drive-along with any individual operating a Beacon vehicle - CDL, company pickup, passenger or rental car, etc. |
| Pre/Post Trip Assessment TEMPLATE | This assessment has been designed to provide guidance as you conduct a pre/post trip assessment. |
| Branch (SER) Assessment TEMPLATE | This assessment is to help ensure good branch communication, safety in the yard and warehouse, and environmental responsibility. |

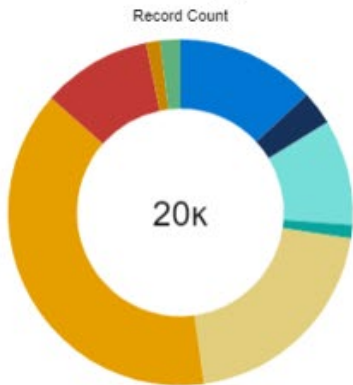


True real-time results



Welcome to Riskconnect!

EHS Assessments and Observations by Ops



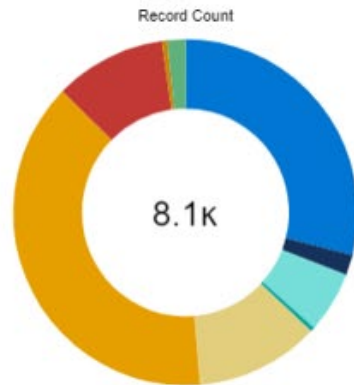
[View Report](#)

Questionnaire Template Name

- Branch (SER) Assessment
- Branch Employee Observation
- Branch Forklift Assessment
- Driver Ride Along
- Job Site Assessment
- Pre/Post Trip Assessment
- Roof Loading Job Site Assessment
- Safety Huddle & Stretching
- Truck Mounted Forklift Assessment

As of Today at 8:10 AM

Leading Indicator Comment by Ops Teams



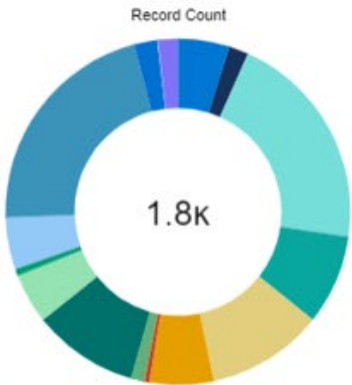
[View Report](#)

Questionnaire Template Name

- Branch (SER) Assessment
- Branch Employee Observation
- Branch Forklift Assessment
- Driver Ride Along
- Job Site Assessment
- Pre/Post Trip Assessment
- Roof Loading Job Site Assessment
- Safety Huddle & Stretching
- Truck Mounted Forklift Assessment

As of Today at 8:10 AM

Assessments and Observations by EHS Team



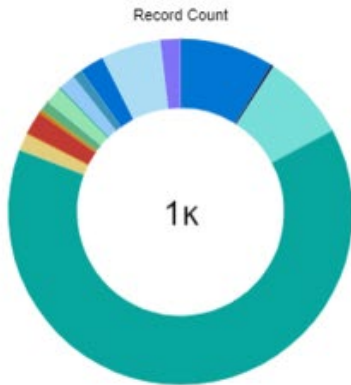
[View Report](#)

Questionnaire Template Name

- Action Item on the Fly EHS
- Boom or Crane Observation EHS
- Branch (SER) Assessment EHS
- Branch Employee Observation EHS
- Branch Forklift Assessment EHS
- Branch PPE Observation EHS
- Driver Ride Along EHS
- Ergonomic Assessment EHS
- Fall Protection PPE Observation EHS
- Job Site Assessment EHS
- Job Site PPE Observation EHS
- Off-Spec Haz Mat Assessment EHS
- Pre/Post Trip Assessment EHS

As of Today at 8:10 AM

CAPAs created by EHS Team



[View Report](#)

Questionnaire Template Name

- Action Item on the Fly EHS
- Boom or Crane Observation EHS
- Branch (SER) Assessment EHS
- Branch Employee Observation EHS
- Branch Forklift Assessment EHS
- Branch Forklift Assessment v1.0
- Branch PPE Observation EHS
- Fall Protection PPE Observation EHS
- Job Site Assessment EHS
- Job Site PPE Observation EHS
- Off-Spec Haz Mat Assessment EHS

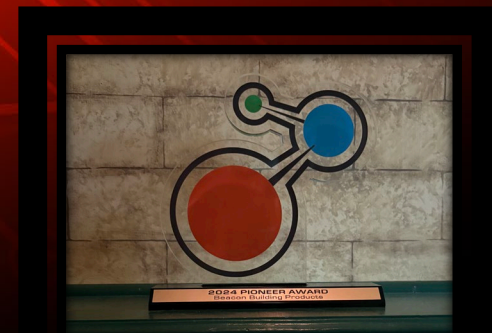
As of Today at 8:10 AM



What has happened . . .

One year since Kōnnect 2024 in Orlando, FL

CONNECTING RISKS THAT MATTER





QXO values

[Residential](#) [Siding](#) [Commercial](#) [Waterproofing](#) [Building materials](#) [TRI-BUILT](#) [Featured brands](#)

Nobody builds like QXO

Shop the top products pros prefer.

What type of project are you working on?

Residential roofing >

Siding >

Commercial roofing >

Waterproofing >

1 Lead with safety

2 Win customer loyalty

3 Deliver results

4 Raise the vibe

5 Do the right thing

6 Never stop building

CONNECTING RISKS THAT MATTER





QXO plans to be the tech-enabled leader in the \$800 billion building products distribution industry.

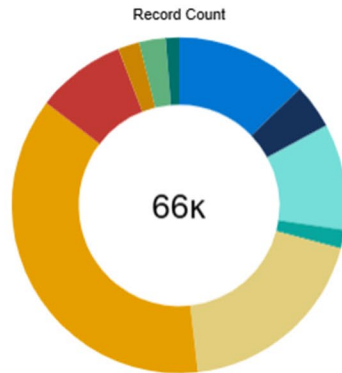


Full adoption across 600 locations



Welcome to Riskconnect!

EHS Assessments and Observations by Ops



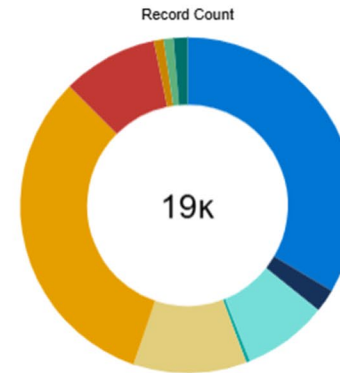
[View Report](#)

Questionnaire Template Name

- Branch (SER) Assessment
- Branch Employee Observation
- Branch Forklift Assessment
- Driver Ride Along
- Job Site Assessment
- Pre/Post Trip Assessment
- Roof Loading Job Site Assessment
- Safety Huddle & Stretching
- Truck & Binder Assessment
- Truck Mounted Forklift Assessment

As of Today at 11:53 AM

Leading Indicator Comment by Ops Teams



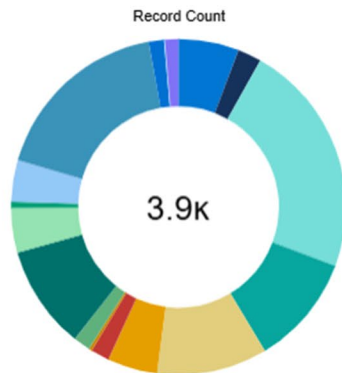
[View Report](#)

Questionnaire Template Name

- Branch (SER) Assessment
- Branch Employee Observation
- Branch Forklift Assessment
- Driver Ride Along
- Job Site Assessment
- Pre/Post Trip Assessment
- Roof Loading Job Site Assessment
- Safety Huddle & Stretching
- Truck & Binder Assessment
- Truck Mounted Forklift Assessment

As of Today at 11:53 AM

Assessments and Observations by EHS Team



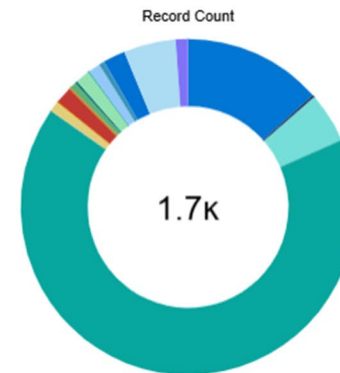
[View Report](#)

Questionnaire Template Name

- Action Item on the Fly EHS
- Boom or Crane Observation EHS
- Branch (SER) Assessment EHS
- Branch Employee Observation EHS
- Branch Forklift Assessment EHS
- Branch PPE Observation EHS
- Driver Ride Along EHS
- Ergonomic Assessment EHS
- Fall Protection PPE Observation EHS
- Job Site Assessment EHS
- Job Site PPE Observation EHS
- Off-Spec Haz Mat Assessment EHS
- Off-Spec Haz Mat Assessment EHS

As of Today at 11:53 AM

CAPAs created by EHS Team



[View Report](#)

Questionnaire Template Name

- Action Item on the Fly EHS
- Boom or Crane Observation EHS
- Branch (SER) Assessment EHS
- Branch Employee Observation EHS
- Branch Forklift Assessment EHS
- Branch Forklift Assessment v1.0
- Branch PPE Observation EHS
- Fall Protection PPE Observation EHS
- Job Site Assessment EHS
- Job Site PPE Observation EHS
- Off-Spec Haz Mat Assessment EHS
- Off-Spec Haz Mat Assessment EHS

As of Today at 11:53 AM

AI – concept to reality . . .

Technology is ever evolving and so must we



Demystifying ML, generative AI, and LLM

MS copilot and ChatGPT are examples of LLM, they are used daily by many RM professionals



- Machine Learning (ML) is a process by which computers learn patterns from data
- Generative AI (GAI) is the use of that learned knowledge to create
- Large Language Model (LLM) is an integrated GAI tool tied to text and code



Forging ahead with caution and vision



New Riskonnect Survey: Cybersecurity and AI Are Biggest Challenges

The data indicates that AI is not seen as a replacement for employees but rather a tool to help risk management teams do their jobs better.





Intelligent Risk

DATA ANALYTICS

Analyze complex data for instant insights into risk outcomes.

NATURAL LANGUAGE PROCESSING

Quickly summarize lengthy and complex content, including human language, images, and videos, with machine learning and large language models.

DASHBOARDS

Communicate the status of risks and other key indicators quickly and effectively.

PREDICTIVE RISK MODELING

Forecast future risks based on deep historical data and trends.



What have we learned?

“All of our dreams can come true, if we have the courage to pursue them.” *Walt Disney*

CONNECTING RISKS THAT MATTER



Parsing of data

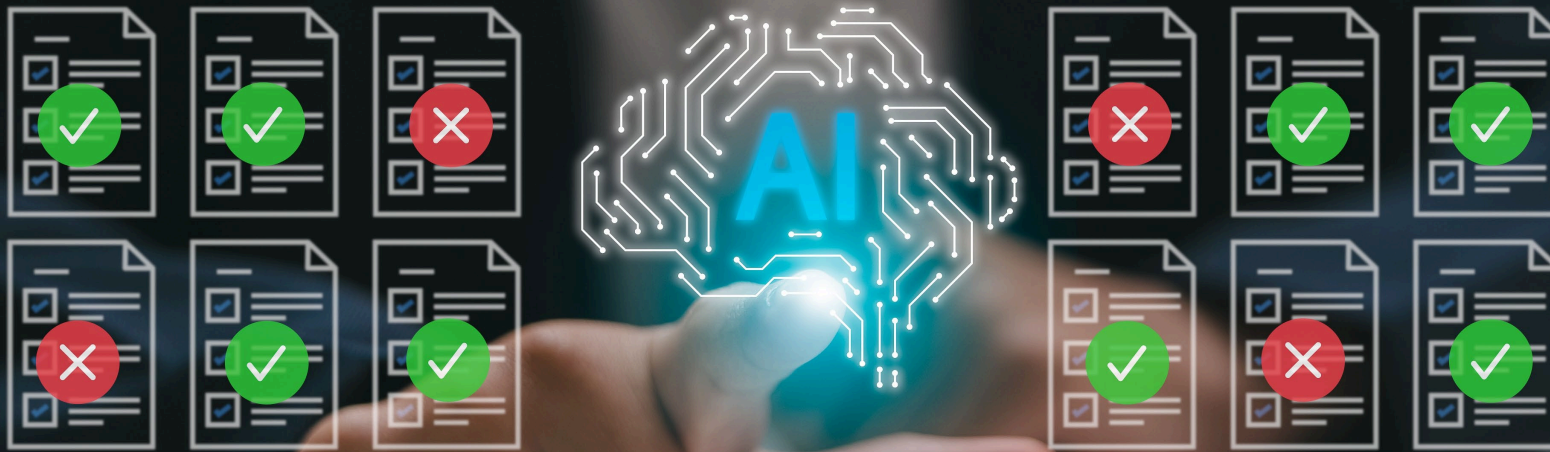
Exploratory data analysis (EDA)

- 18 months and 1.75 million data points
- Review content of questions and comments
 - How might they have led to an incident?
- Strategic focus areas investigated
 - Branch & Job Site Safety Evaluations
 - 2 of QXOs 20 questionnaire forms



Addressing validity of AI output

Testing is critical



How do we obtain the output that we're seeking?

What have we gained

The journey has begun!

Insight from our employees as to how they see their environment
... and what possible risks exist.



Where are we going . . .

The future is always one night away

CONNECTING RISKS THAT MATTER



Our next steps

- Evaluate efficiency of existing questions
- Compare input from field personnel vs SMEs
- Incorporate data from incident intakes and claims
- Evaluate both internal and non-internal data such as delivery time expectations, weather, traffic, natural disasters, etc.





In real time, in the field, when it matters!

1. Assess / observe
2. Gather comments
3. Analytics / AI
4. Realtime feedback
5. Incident avoidance
6. “Lead with Safety”

What can you do . . .

Embrace your vision

CONNECTING RISKS THAT MATTER



Engage with your Riskonnect team to stay ahead with rapidly evolving technological advancements . . .

- Data Analytics
- Artificial Intelligence
- Predictive Modelling
- Create an AI plan
- Train your workforce in AI
- Conduct scenario planning



Connect with us . . .

2025 **KOnnect**



Steve Hemingway

e: Steven.Hemingway@QXO.com

t: 508.245.2339

w: QXO.com

 [in/stevenbhemingway/](https://www.linkedin.com/in/stevenbhemingway/)



Kim Alderman

e: Kim.Alderman@Riskonnect.com

t: 770.790.4700

w: Riskonnect.com

 [in/in/kimalderman/](https://www.linkedin.com/in/kimalderman/)



Stuart Rose

e: Stuart.Rose@Riskonnect.com

919.986.1466

w: Riskonnect.com

 [in/in/stuardrose/](https://www.linkedin.com/in/stuardrose/)

2025 **Kōnnect**

Questions?

CONNECTING RISKS THAT MATTER

THE MATRIX

Thank You!

CONNECTING RISKS THAT MATTER

2025  **Konnnect**