

Riskconnect's Active Risk Manager software helps you effectively manage risks from the project level up through the enterprise.

View risk from every perspective. Visualize risk at project, program, and enterprise levels – as well as the relationships between risks – to make more effective decisions.

Understand the upstream and downstream impacts of project risks. Prioritize risk-mitigation activities that have the greatest reach.

Avoid small problems that add up to big disruptions. Aggregate risk data from frontline projects to spot trends and address threats from an enterprise vantage point.



“ARM can give practitioners analytics with which to take proactive actions to mitigate risks or exploit opportunities. It has also allowed our leadership to have business intelligence information in front of them so that they can understand what an individual program's risks or opportunities may be doing to their overall portfolio.”

Steve Lundquist
Elbit America

Product Highlights

BOWTIE CAUSE-AND-EFFECT ANALYSIS



Expand your risk view to prepare for deeper analysis of key events, which helps identify critical controls.

JOB SAFETY ANALYSIS



Prevent injury or loss of life by tracking risks and hazards on the job site.

RISK REGISTER



See risks across projects, programs, and portfolios – and quickly aggregate the data using custom filters.

SCHEDULE AND COST IMPACT ANALYSIS



Remove uncertainty from projects with powerful risk cost and schedule risk analysis.

RISK ANALYTICS AND INSIGHTS



Easily customize reporting and dashboards to tell your story and inform decisions.

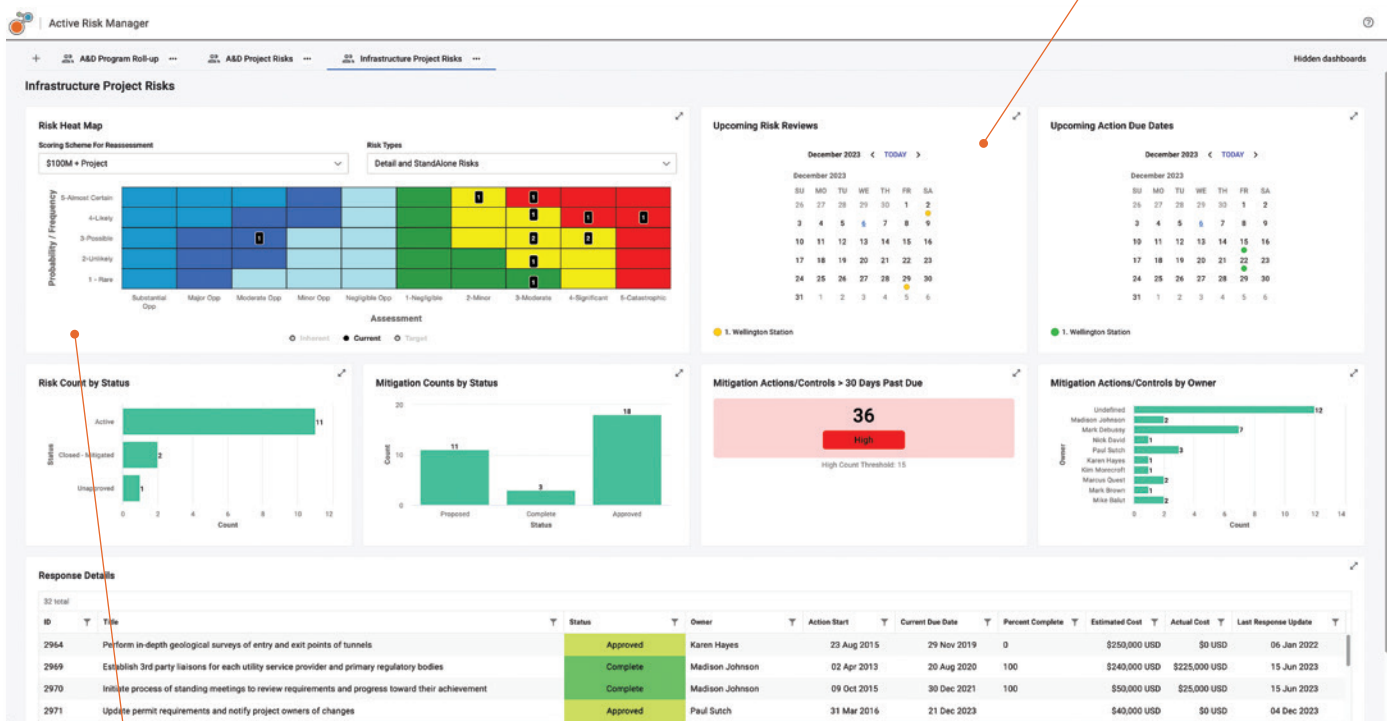
A CLOSER LOOK: ACTIVE RISK MANAGER

Get a Bird's-Eye View of What's Happening on the Ground

Riskconnect's ARM software helps you understand risk at every level and easily aggregate the data at the enterprise level.

- Seamlessly manage risk from project to enterprise level within the same risk register.
- Spot growing risks and emerging trends across projects.
- Easily collaborate on decisions to ensure that project goals are met on schedule and on budget.
- Show collaborators relevant information based on security controls, not necessarily every data point.

Configure your dashboard to show data that matters most to you.



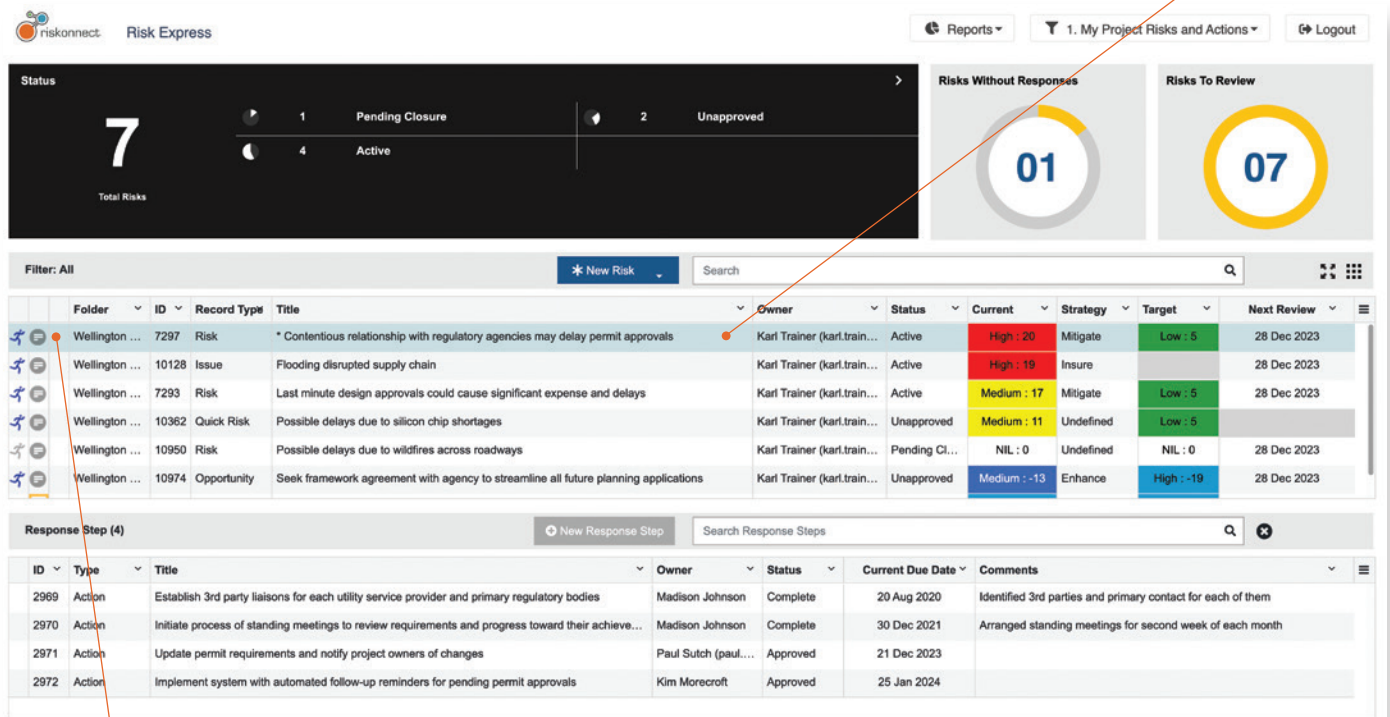
Drill down into your data for deeper insight.

Don't Tie Up Resources Unnecessarily

Riskconnect's ARM software uses sophisticated analytical tools to help you confidently predict project costs, time frame, and variability.

- Capture data from construction managers, engineers, and other non-risk professionals with an intuitive interface that's easy to navigate even for occasional users.
- Optimize where and how resources are allocated to ensure your contingency fund provides a reasonable cushion without wasting resources.
- Understand how risk affects the bottom line so your money can be effectively budgeted.

Quickly update risk data in a familiar spreadsheet-like format.



Drill down to see full details, including mitigation information.

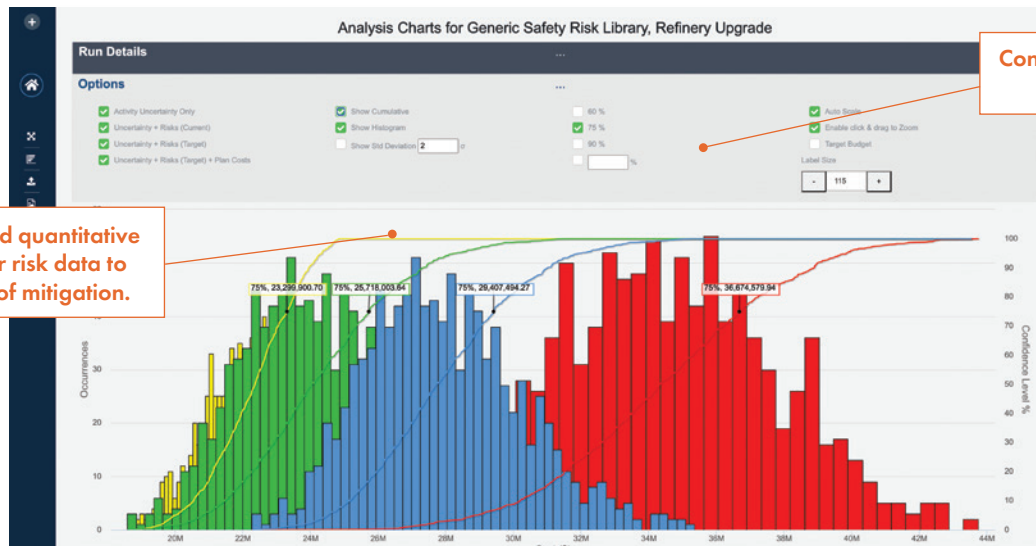
“I like the flexibility that we can start a risk register on what is called ARM's Risk Express. It's a very simple tool that goes very quickly. So that entry barrier for risk managers or data input is not there. It's literally like getting your notebook out and start jotting down notes.”

Eduardo Gamez
Westinghouse

Stay on Track from Start to Finish

Riskconnect's ARM software automates every step of the risk lifecycle to help you proactively manage risks and successfully complete projects.

- Streamline administrative tasks, easily customize your configuration, and get to go-live quickly.
- Use API integrations to seamlessly connect your project risk data with any system inside and outside your organization.
- Adjust project schedules based on risk data to minimize unanticipated costs and schedule slippage.
- Maintain a library of risk information with past experience data and lessons learned to guide future projects.



Perform advanced quantitative analyses on your risk data to show the effects of mitigation.

Configure, run, and save your analysis.

Meet Special Industry Requirements

Riskconnect's Active Risk Manager software offers both secure cloud hosting and on-premises configurations to meet the exacting hosting and security requirements of certain industries.

- Standard frameworks – including ISO 31000, COSO, PMBOK, GAO
- Industry frameworks – including DOD RIO guide, OMB A-123, OMB A-11, FAA risk management policy

ABOUT RISKCONNECT

Riskconnect is the leading integrated risk management software solution provider. Our technology empowers organizations with the ability to anticipate, manage, and respond in real-time to strategic and operational risks across the extended enterprise.

More than 2,000 customers across six continents use our unique risk-correlation technology to gain previously unattainable insights that deliver better business outcomes. Riskconnect has more than 800 risk management experts in the Americas, Europe, and Asia.

Visit riskconnect.com to learn more – or schedule a meeting with our experts here.

SCHEDULE A DEMO →



RISKCONNECT'S INTEGRATED RISK MANAGEMENT SOLUTIONS

Risk Management Information System

Claims Administration

Third-Party Risk Management

Enterprise Risk Management

Business Continuity and Resilience

Environmental, Social, Governance

Internal Audit

Compliance

Policy Management

Project Risk Management

Business Continuity & Resilience

Health & Safety